

Millennials' Toolbox

Sam Houston State University South Residential Complex





The Millennials have landed.



Session: 092913

Date: Thursday, September 29, 2016

Time: 11:15am – 12:15pm



The Millennials' Tools for Communication and Coordination

Presented by:

- Erin Joseph Machac, AIA, Principal | Project Director, Stantec
- Charrid Stone, Sr. Project Manager and Registered Architect, SpawGlass Contractors, Inc.
- Jeff Vienneau, CEFP, Director for Residence Life Facilities and Maintenance, Sam Houston State University



Sam Houston State University



Prezi



This program is registered with the AIA/CES for continuing professional education. As such, it does not include content that may be deemed or construed to be an approval or endorsement by the AIA of any material of construction or any method or manner of handling, using, distributing, or dealing in any material or product. Questions related to specific materials, methods, and services may be addressed at the conclusion of this presentation.



Millennials' Toolbox

Sam Houston State University South Residential Complex



SHSU South Res Complex



232,822 Square Feet
700 Beds 6 Stories
30+ Subcontractors
220+ Crew 22 Months

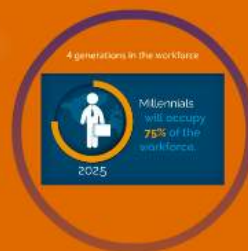
Who are Millennials?

Those born between 1980 and 2000

Confident Demanding Buy-in

Forward thinking about technology

Strive for efficiency



4 generations in the workforce



Millennial Mindset



75% of millennials believe they'll have **2-5 employers** during their lifetime

MILLENNIALS place more importance on **work/life balance** than **financial compensation**



>41% prefer to communicate



THROUGH **ELECTRONICAL MEANS**

than face-to-face or on the telephone



Millennial Toolbox on the SHSU Project



bluebeam
NO LIMITS

Millennial Mindset



75% of millennials believe they'll have **2-5 employers** during their lifetime

MILLENNIALS place more importance on **work/life balance** than **financial compensation**



>41% prefer to communicate



THROUGH **ELECTRONICAL MEANS**

than face-to-face or on the telephone



Millennial Toolbox

on the SHSU Project



Project Team Communication Requirements

- Efficient Communication
- Digital Native vs Digital Immigrant
- Use the media that is effective for the audience

Pre-Construction

Simultaneous constructability reviews



Construction

Coordination meetings
Document control
Digital inspections



Completion

Quality control / Punchlists
As-built & record documents



Pre-Construction

Simultaneous constructability reviews





- Structure
- Bookmarks
- G001 - PROJECT COVER SHEET
 - G011 - DRAWING INDEX
 - G100 - CODE INFORMATION
 - G101 - CODE ANALYSIS - FIRST LEV...
 - G102 - CODE ANALYSIS - SECOND LE...
 - G103 - CODE ANALYSIS - THIRD LE...
 - G104 - CODE ANALYSIS - FOURTH L...
 - G105 - CODE ANALYSIS - FIFTH LEV...
 - G106 - CODE ANALYSIS - SIXTH LEV...
 - G107 - CODE ANALYSIS - PENTHOUSE
 - S001 - STRUCTURAL NOTES
 - S101 - 1ST FLOOR COMPOSITE FOU...
 - S102 - 2ND FLOOR COMPOSITE FO...
 - S103 - 3RD FLOOR COMPOSITE FO...
 - S104 - 4TH FLOOR - 6TH FLOOR CO...
 - S107 - ROOF COMPOSITE FRAMING
 - S108 - PENTHOUSE ROOF COMPOS...
 - S111A - FOUNDATION PLAN AREA A
 - S111B - 1ST FLOOR FOUNDATION P...
 - S111C - 1ST FLOOR FOUNDATION P...
 - S111D - 1ST FLOOR FOUNDATION P...
 - S111E - FOUNDATION PLAN AREA E
 - S112B - 2ND FLOOR FRAMING PLAN...
 - S112B-MS - 2ND FLOOR M.S. REINF...
 - S112B-FT - 2ND FLOOR F/T REINF...
 - S112C - 2ND FLOOR FRAMING PLAN...
 - S112D - 2ND FLOOR FRAMING PLAN...
 - S112D-MS - 2ND FLOOR M.S. REINF...
 - S112D-FT - 2ND FLOOR F/T REINF...
 - S113A - 3RD FLOOR FRAMING PLAN...
 - S113B - 3RD FLOOR FRAMING PLAN...
 - S113B-MS - 3RD FLOOR M.S. REINF...
 - S113B-FT - 3RD FLOOR F/T REINF...
 - S113C - 3RD FLOOR FRAMING PLAN...
 - S113C-MS - 3RD FLOOR M.S. REINF...

02_STRUCT & ARCH SHSU SRC 95% CD

SOUTH RESIDENCE COMPLEX

95% CONSTRUCTION DOCUMENT REVIEW

SAM HOUSTON STATE UNIVERSITY



PROJECT SITE

NORTH MAP

The Texas State University System Board of Regents
 Donna N. Williams, Chairman, Arlington
 Ron Mitchell, Vice Chairman, Horseshoe Bay
 Charles Artale, San Antonio
 Dr. James R. Garcia, San Antonio
 Kevin J. Lilly, Houston
 David Montagna, Beaumont
 Vernon Rouse III, Belton
 Roseanna Salazar Austin
 William R. Scott, Midland
 Anna Sandevik, Student Regent, Alpine

The Texas State University System Administration
 Brian McCull, Ph.D., Chancellor
 Peter B. Graves, Vice Chancellor for Contract Administration
 Rob Ray, Partner, Associate Vice Chancellor for Facilities

Sam Houston State University Administration
 Dana G. Hoyt, President
 Dr. Carlos Hernandez, Vice President of Finance and Operations
 Frank Parker, Vice President for Student Services
 Douglas J. Greening, Associate Vice President of Facilities Management
 Keith Jenkins, Associate Vice President of Student Services, Facilities & Operations



Stantec

SHWGROUP

TREANOR ARCHITECTS

SHSU

G001



studio.bluebeam.com

Home Session Project

Start Join Settings

Sessions

My Sessions

SHSU SRC	016-457-770
SHSU SRC	704-953-939

Attended Sessions

SHSU SRC	239-283-432
----------	-------------

Projects

My Projects

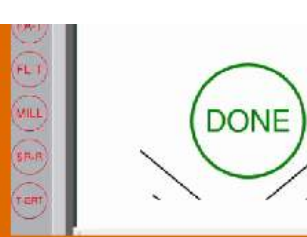
SHSU SRC	660-103-311
SHSU SRC	704-953-939

Attended Projects

SARC - San	131-217-086
TXST MSH	225-013-562
SHSU SRC I	114-906-979
SHSU SRC	574-165-286
SHSU SRC	016-457-770
SHSU SRC	239-283-432
TXST MSH	076-583-785

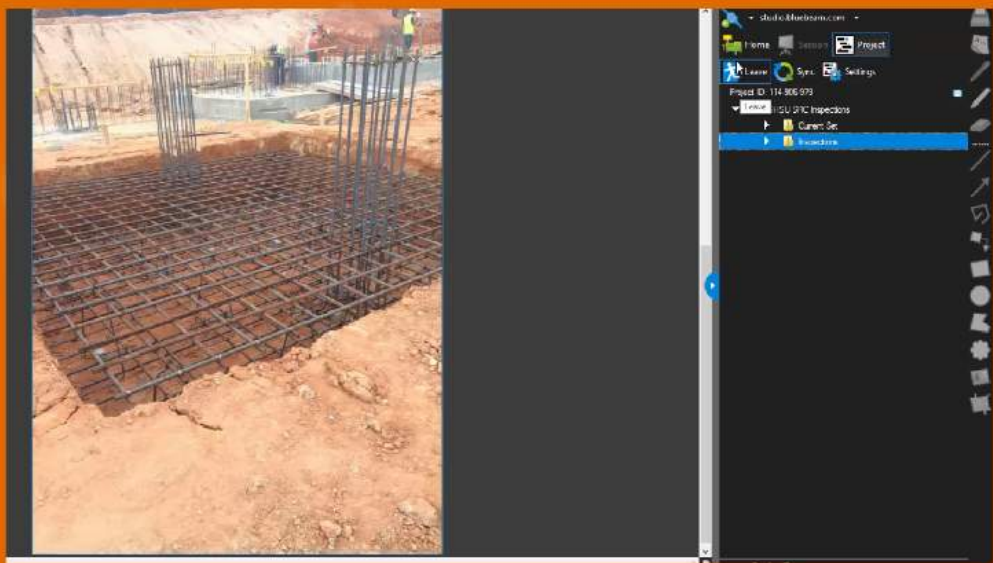


04-BUSC	084.1718
01-0018	149.355
04-BUSC	136.05.45
04-BUSC	131.0784
04-BUSC	104.053
04-BUSC	81.18.34
04-BUSC	84.0772
04-BUSC	136.05.45
04-BUSC	064.05.45
04-BUSC	071.11.27



Construction

- Coordination meetings
- Document control
- Digital inspections





studio.bluebeam.com

Home Session Project

Leave Sync Settings

Project ID: 114-906-979

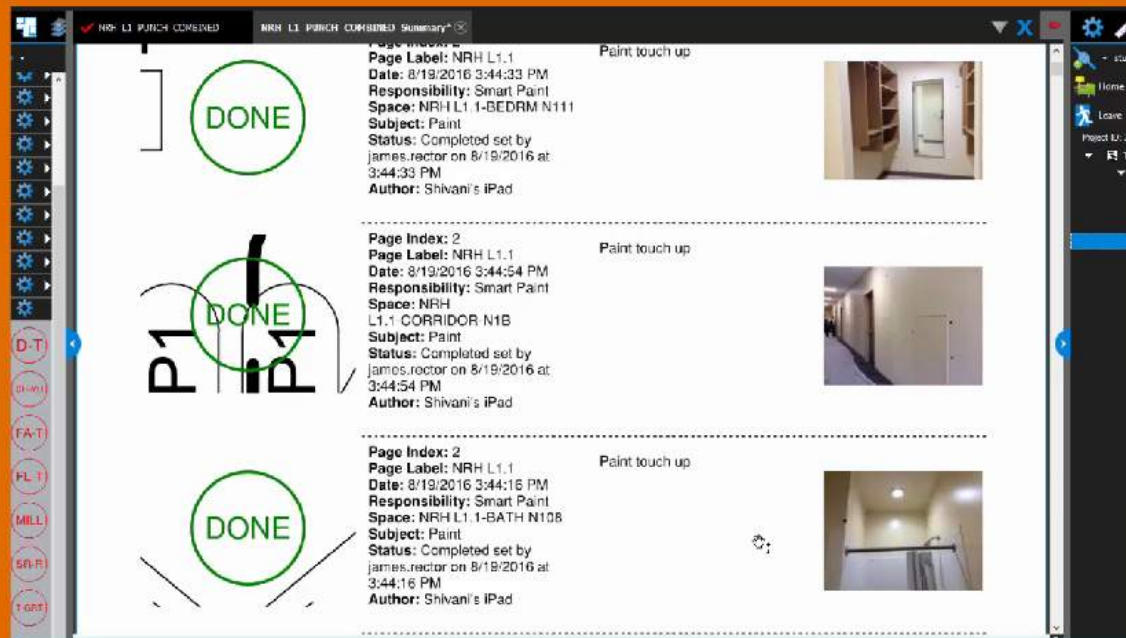
Leave HSU SRC Inspections

- Current Set
- Inspections

Navigation icons: Home, Session, Project, Leave, Sync, Settings, and a vertical toolbar with various drawing and editing tools.

Completion

Quality control / Punchlists
As-built & record documents





Page Index: 1
Page Label: NRH L1.1
Date: 8/19/2016 3:44:33 PM
Responsibility: Smart Paint
Space: NRH L1.1-BEDRM N111
Subject: Paint
Status: Completed set by james.rector on 8/19/2016 at 3:44:33 PM
Author: Shivani's iPad

Paint touch up



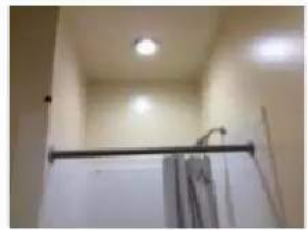
Page Index: 2
Page Label: NRH L1.1
Date: 8/19/2016 3:44:54 PM
Responsibility: Smart Paint
Space: NRH L1.1-CORRIDOR-N1B
Subject: Paint
Status: Completed set by james.rector on 8/19/2016 at 3:44:54 PM
Author: Shivani's iPad

Paint touch up



Page Index: 2
Page Label: NRH L1.1
Date: 8/19/2016 3:44:16 PM
Responsibility: Smart Paint
Space: NRH L1.1-BATH N108
Subject: Paint
Status: Completed set by james.rector on 8/19/2016 at 3:44:16 PM
Author: Shivani's iPad

Paint touch up



- D-T
- OH-MH
- FA-T
- FL-T
- MILL
- SR-R
- T-GRT

studio

Home

Leave

Project ID: 225-4

TXST

Going Forward

1. Face to face is essential
2. Speed of schedule versus quality
3. Integrated software from developers
4. Just because you have the tools...
doesn't mean you have to use them





Seminar Evaluation

We hope you enjoyed this session...

Please take a moment to complete the evaluation form.

Thank you!



Millennials' Toolbox

Sam Houston State University South Residential Complex

