



*Managing Metamorphosis,
Building for Change*



Session: 100307

Date: Friday, October 3, 2012

Time: 9:45 am – 10:45 am





*Managing Metamorphosis,
Building for Change*



How “Collaboration and Interaction” Highly Impact Design

Presented by:

- **Bryan Floth (Jacobs) with Cassandra Nash (UNT System)**



Collaboration and Interaction

Impact on design

[illegible]

Culture of Collaboration Space

INGREDIENTS

- **At a Collision Location**
(where paths cross)
- **Appropriate Architecture**
(space, volume, texture, daylight, acoustics, visibility)
- **Appropriate Technology**
(Meets action requirements of space)
- **Appropriate Rest Form or Furniture**



THE GOOD



THE BAD

Project Example

University of North Texas, Denton Business Leadership Building

(2009 Design)

180,000 gross square feet

Jacobs+Ennead Architects

The University of North Texas at Denton has one of the largest colleges of business in the nation. At the heart of the campus, the new Business Leadership Building was planned as a high-profile facility that serves as a beacon for attracting new students, faculty and business partners to the University.



Business Administration Building : Previous facility

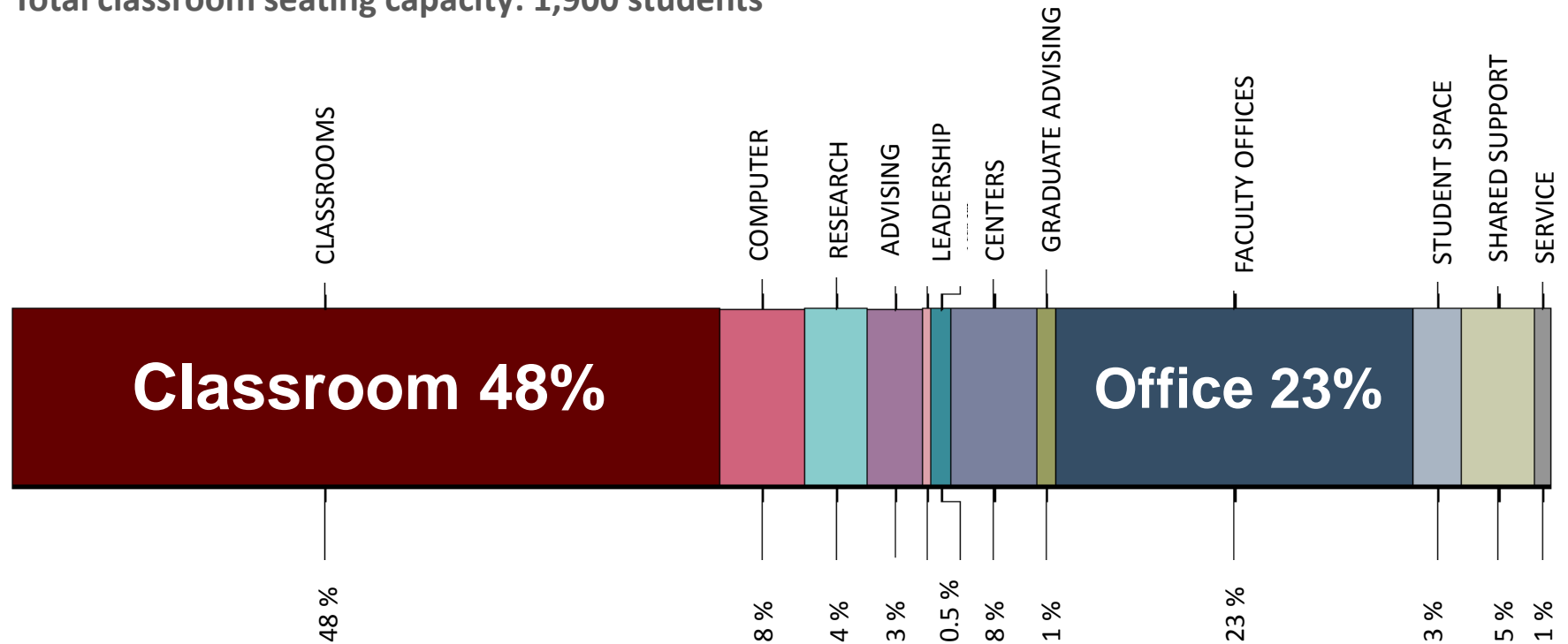
Program

Summary

Classrooms

26 total: 2 Lecture Halls, 4 Large Classrooms; 4 Executive Graduate Classrooms; 14 Medium and Small Classrooms; 2 Seminar Rooms.

Total classroom seating capacity: 1,900 students

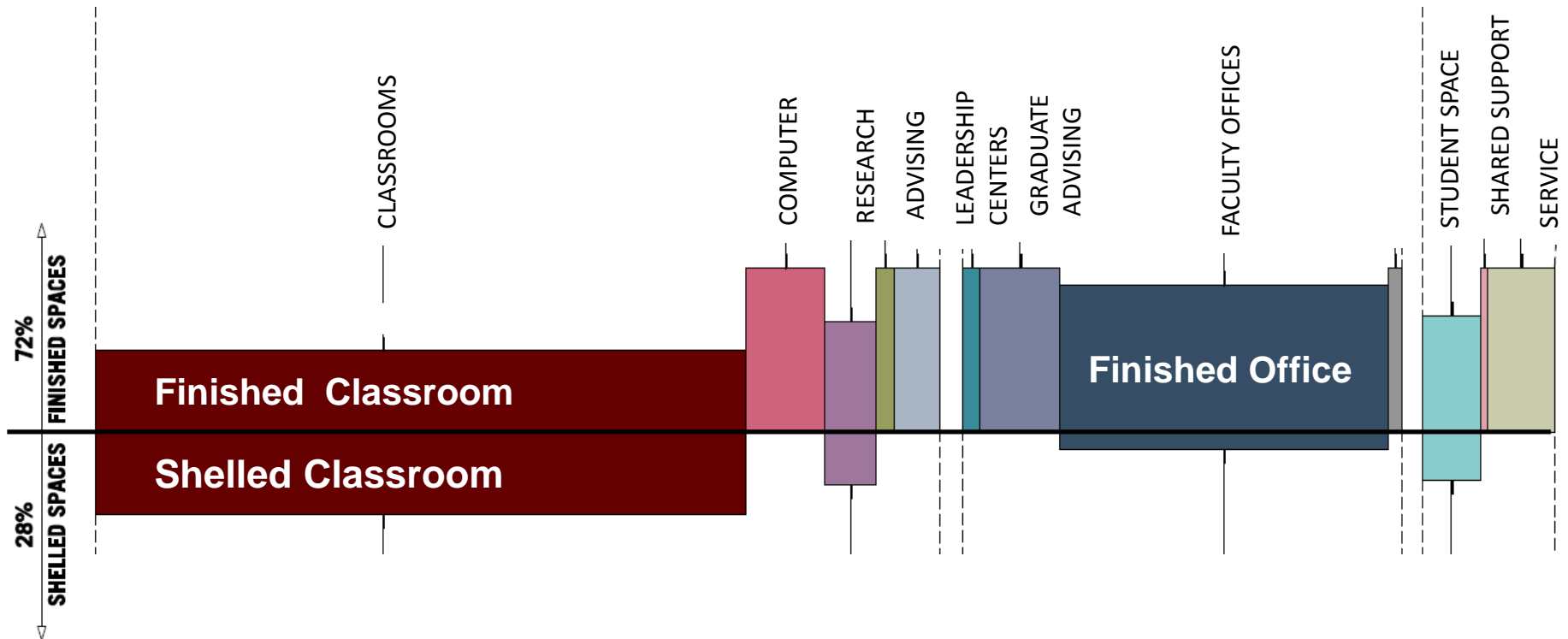


Offices

147 faculty offices; 67 administration/staff offices

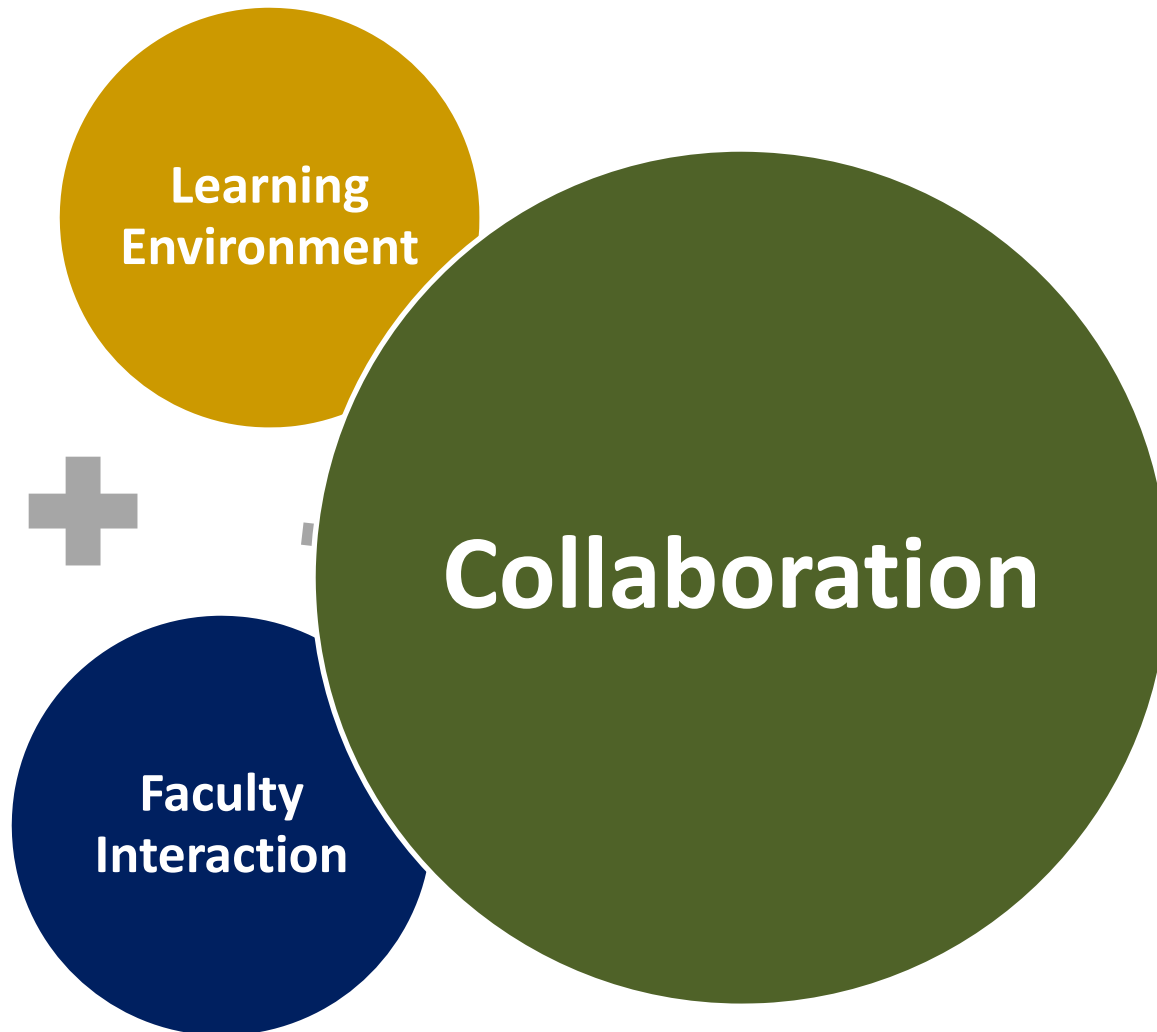
Initial Cost / Shell Strategy

(2010-2011 Construction)



Project Goal

Projected college **size** of more than 7,500 students and 140 faculty



Program Goal Must Haves . . .

Collaboration

Student with Student

Undergraduate Student with Graduate Student

Business Student with Non-Business Student

Student with Faculty

Faculty with Faculty



Program Goal Must Haves . . .

Collaboration

Student with Student

Undergraduate Student with Graduate Student

Business Student with Non-Business Student

Student with Faculty

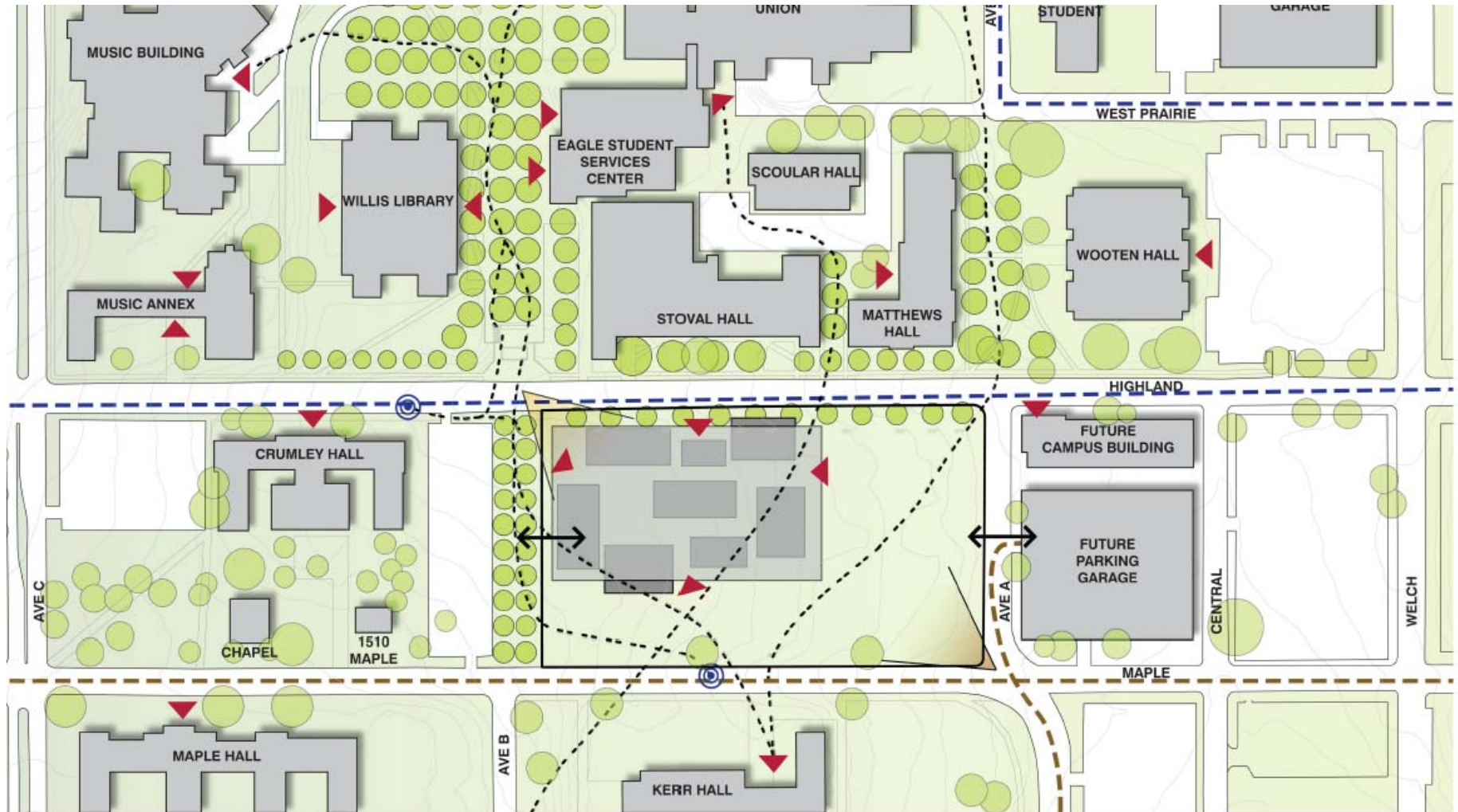
Faculty with Faculty



"Public Space"

COLLABORATION

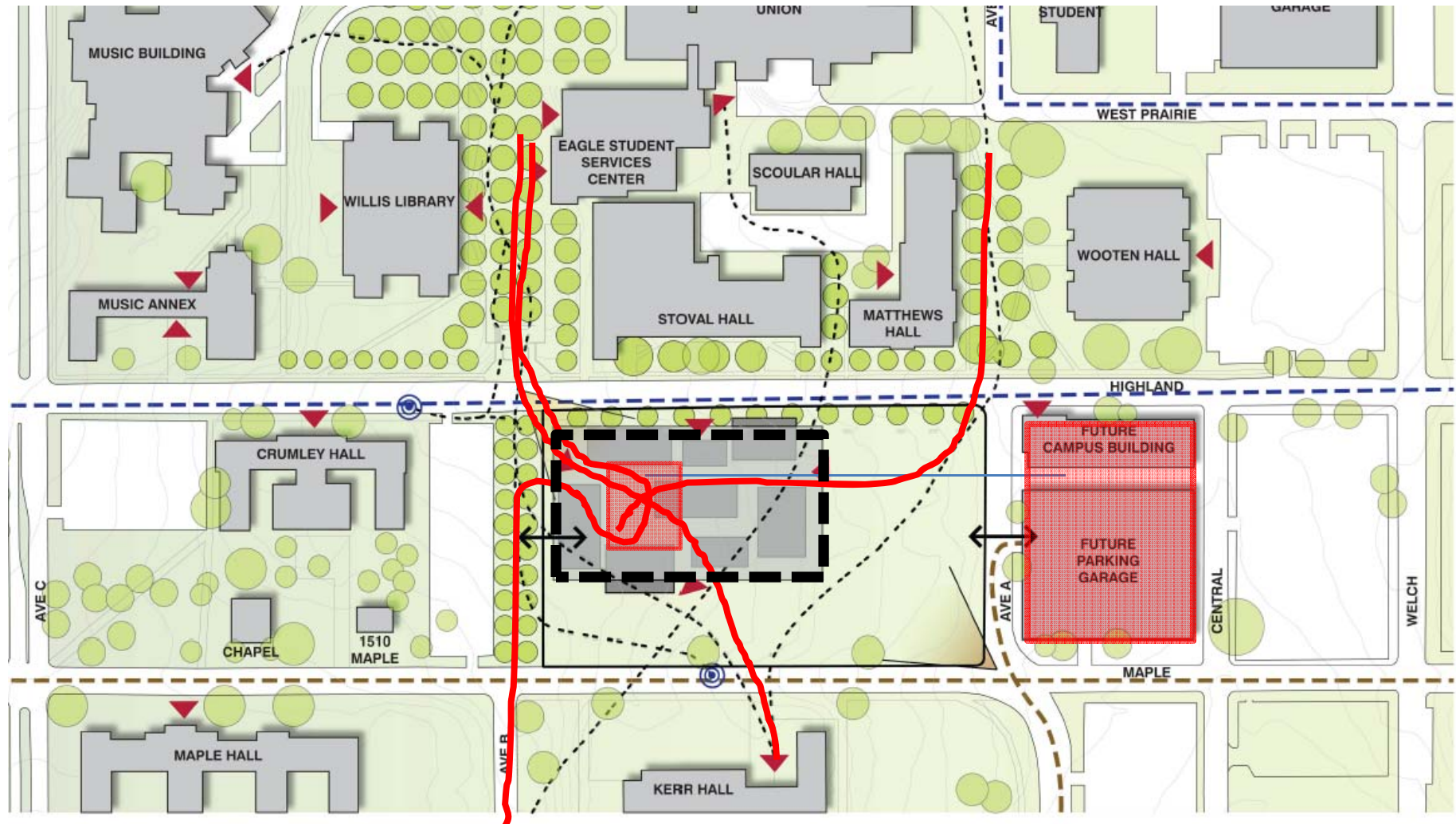
Campus Pathway (Collisions)



SITE PLAN DIAGRAM

▲ = Building Entrance

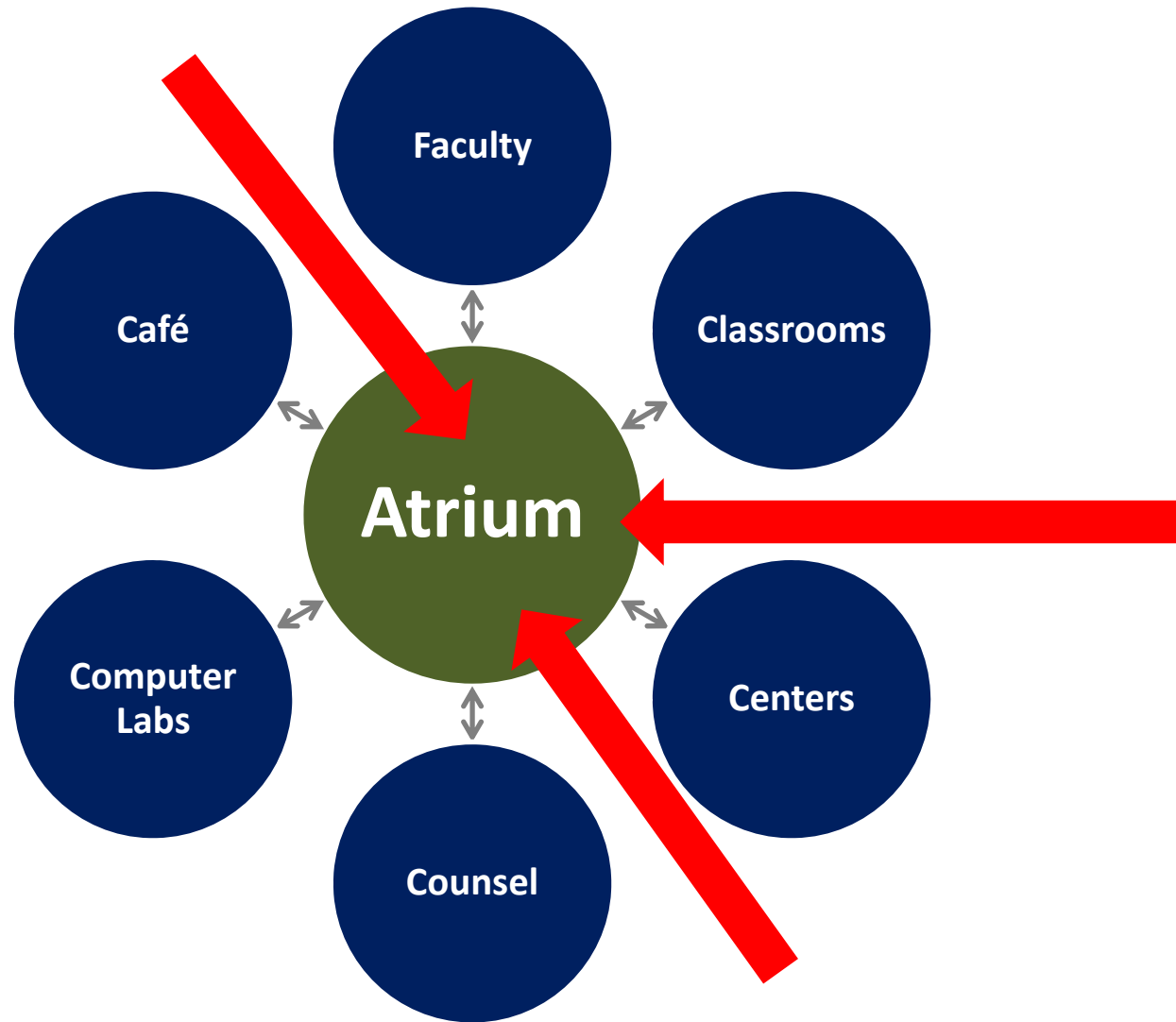
Campus Pathway (Collisions)



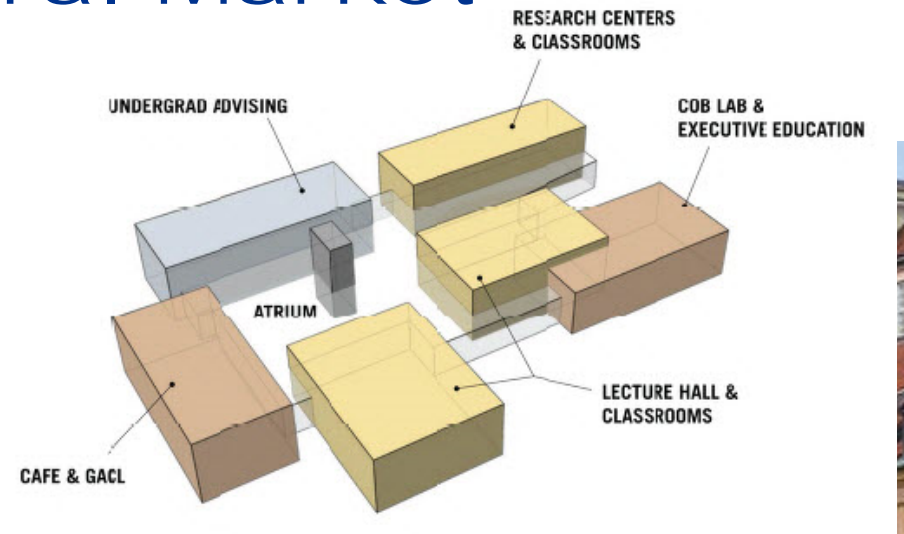
SITE PLAN DIAGRAM

▲ = Building Entrance

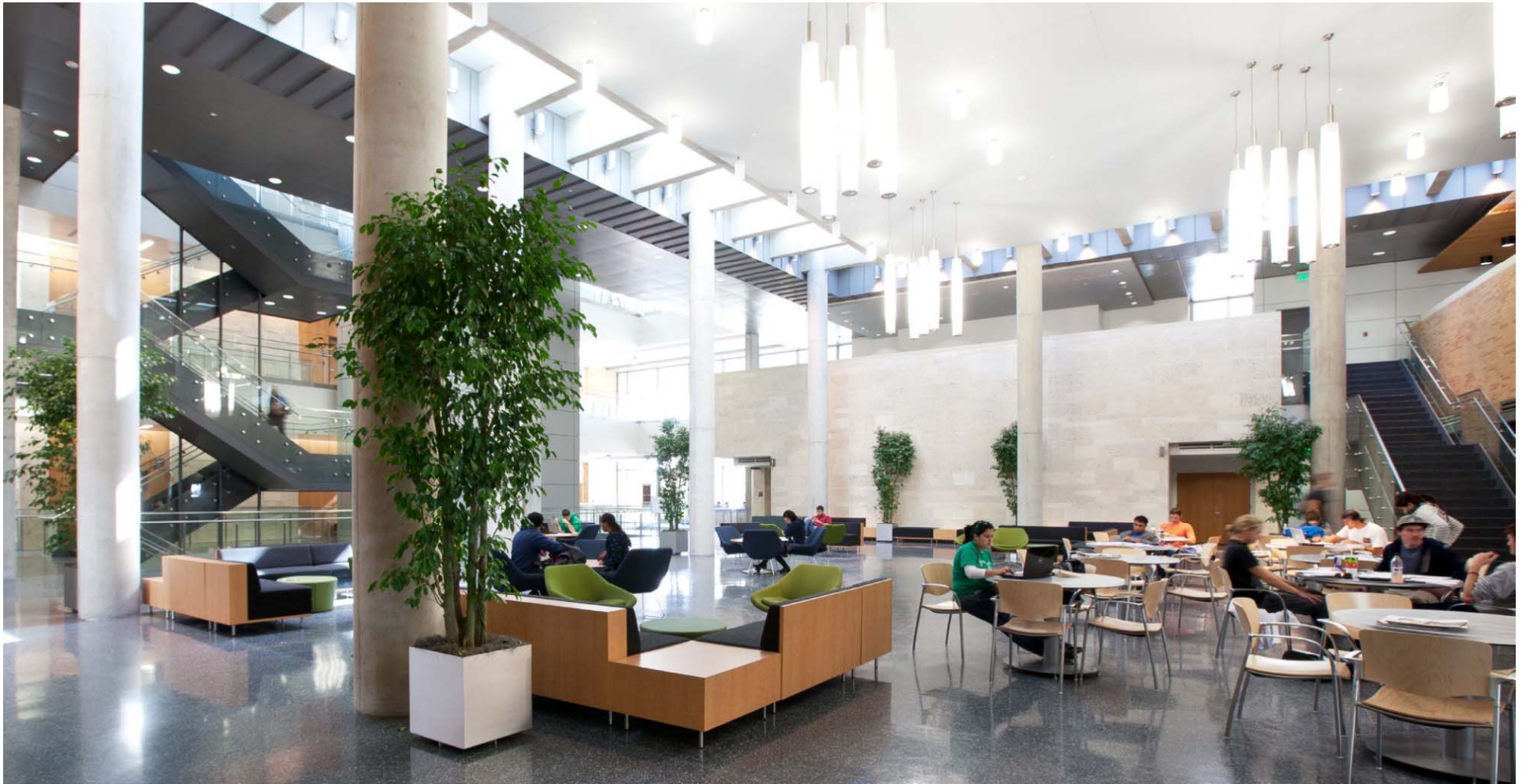
Destination Pathway Collision



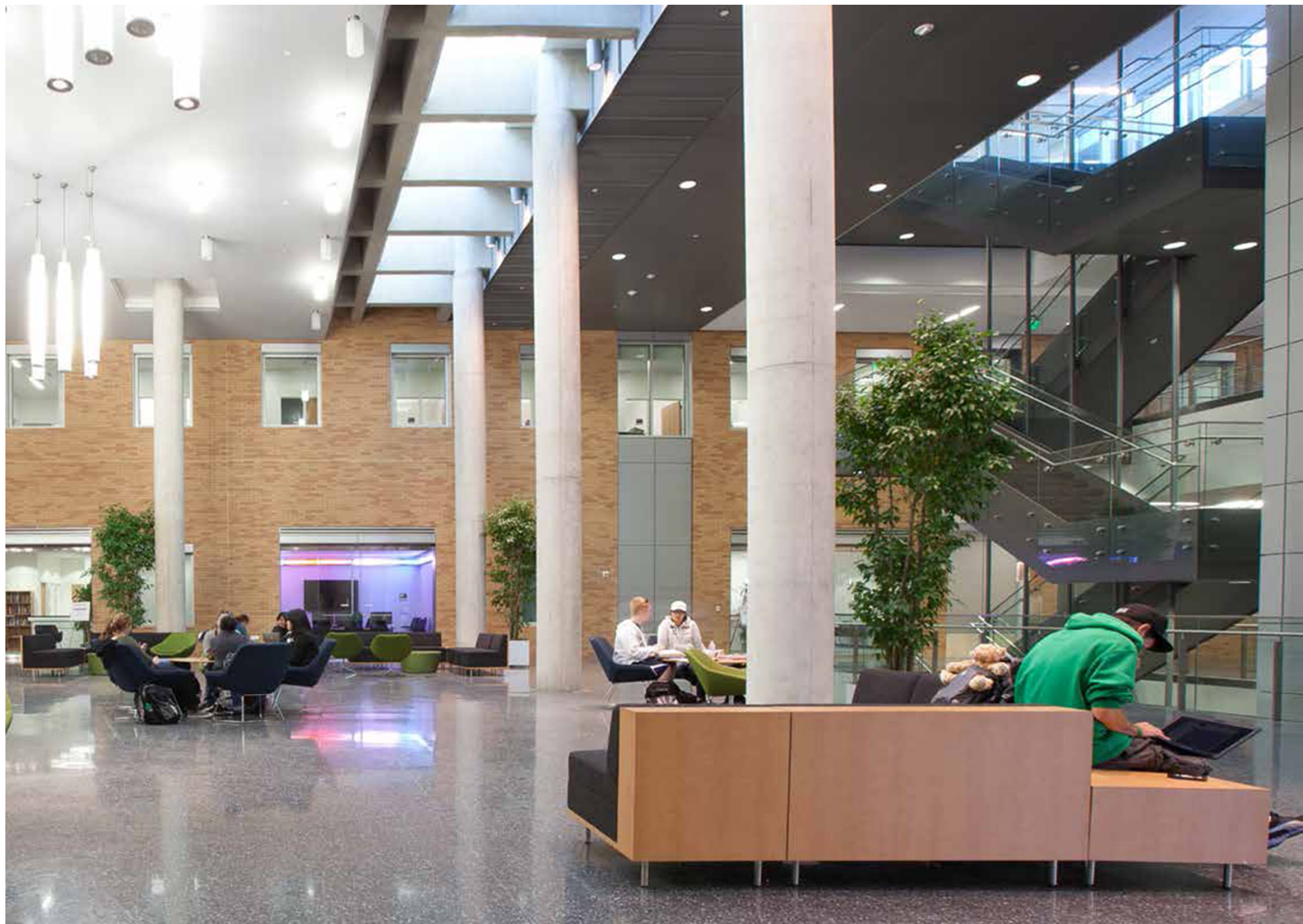
Town Square / Central Market

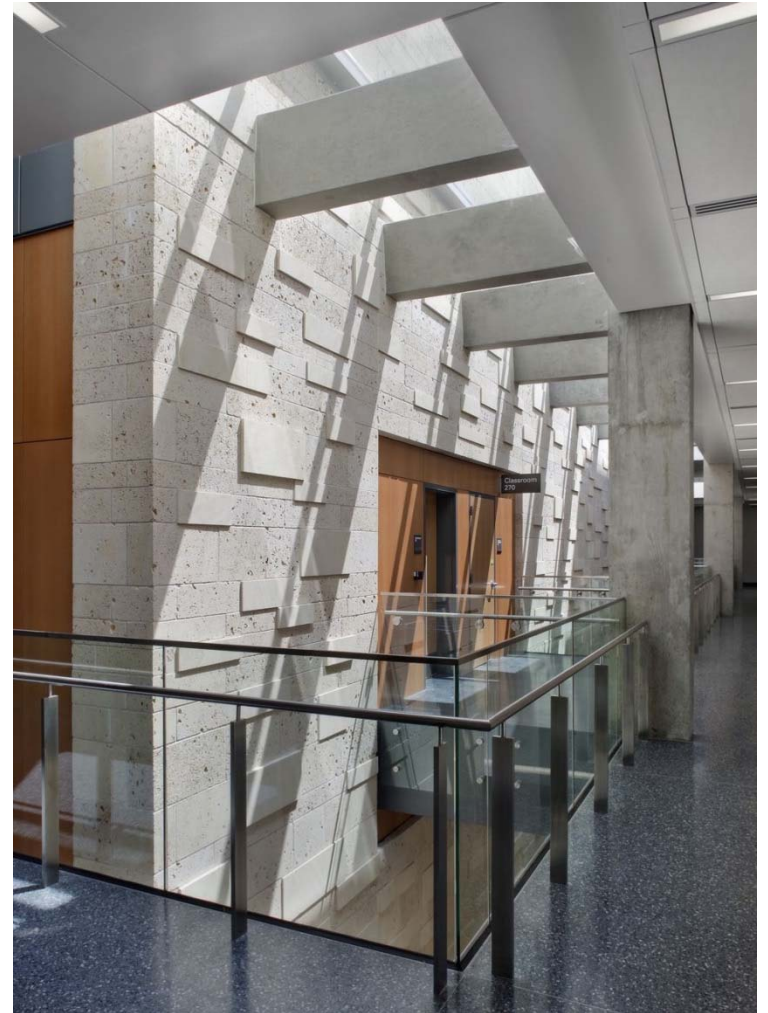


Town Square







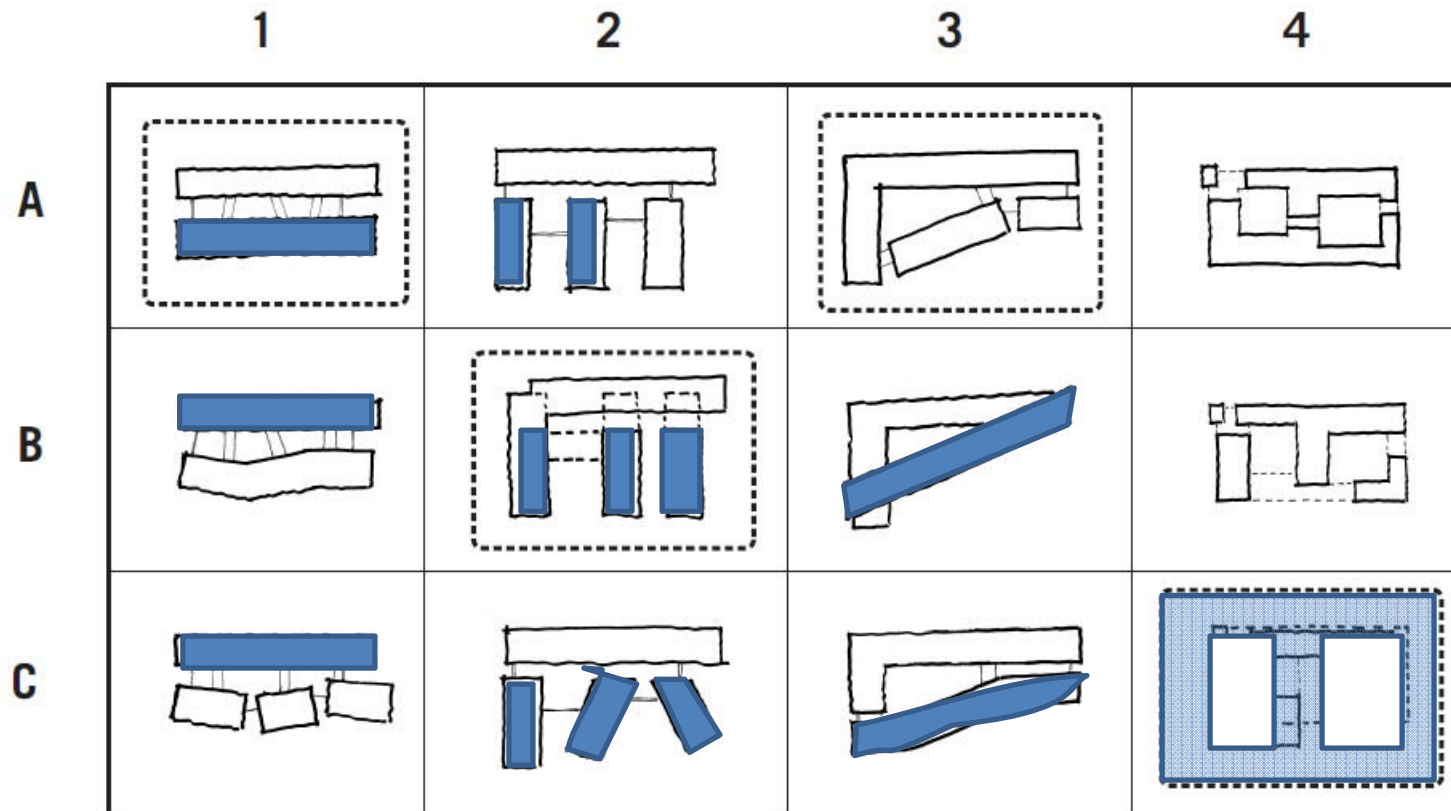


Faculty / Faculty Collaboration AND COLLISIONS . . .

Faculty Office GOALS

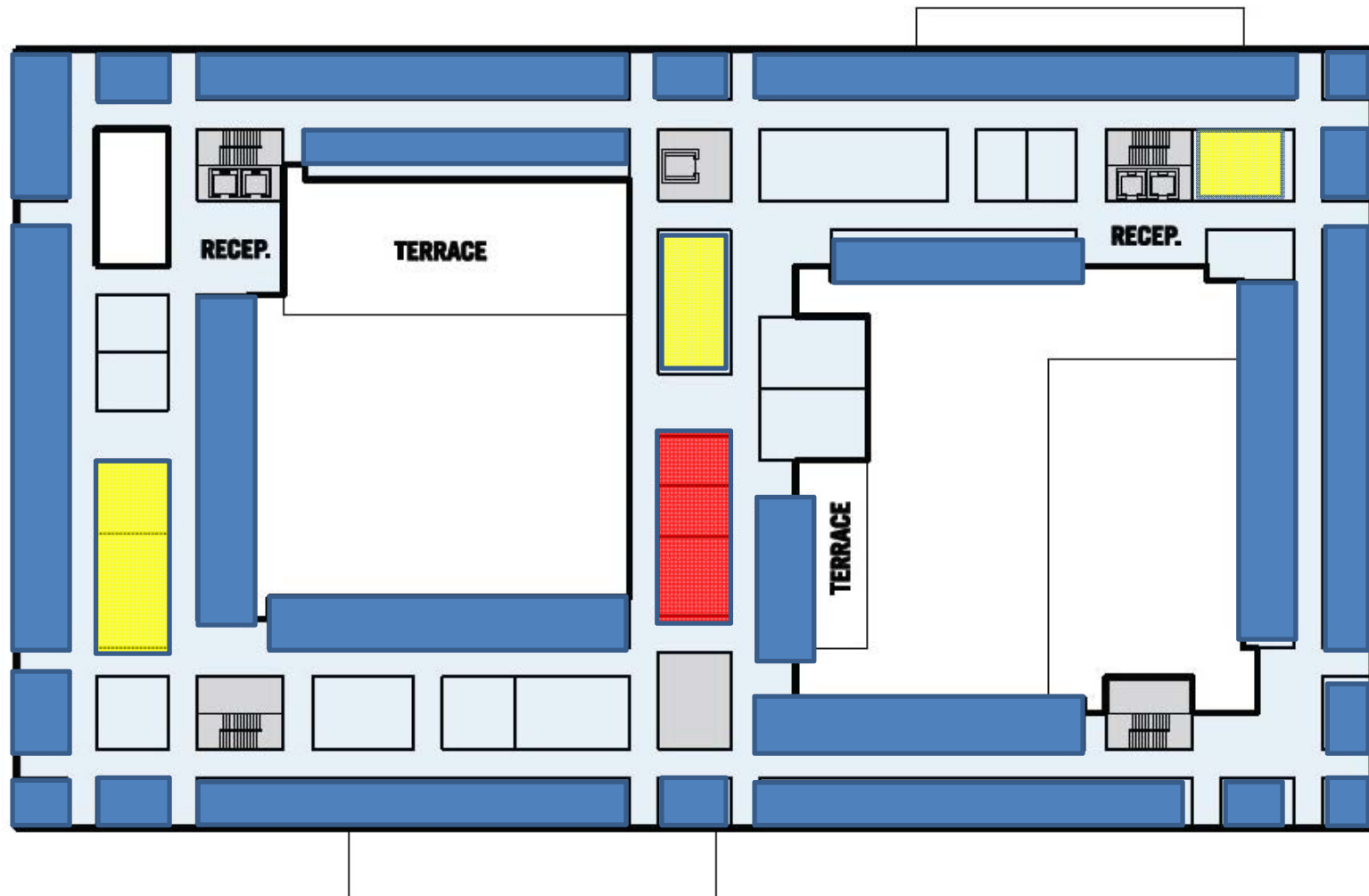
- All offices equal (*Easy*)
- All MUST have a window (*Hard*)
- No kingdoms (intermix) (*Harder*)
- All on same floor level (*Hardest*)

Faculty Office Layout Options

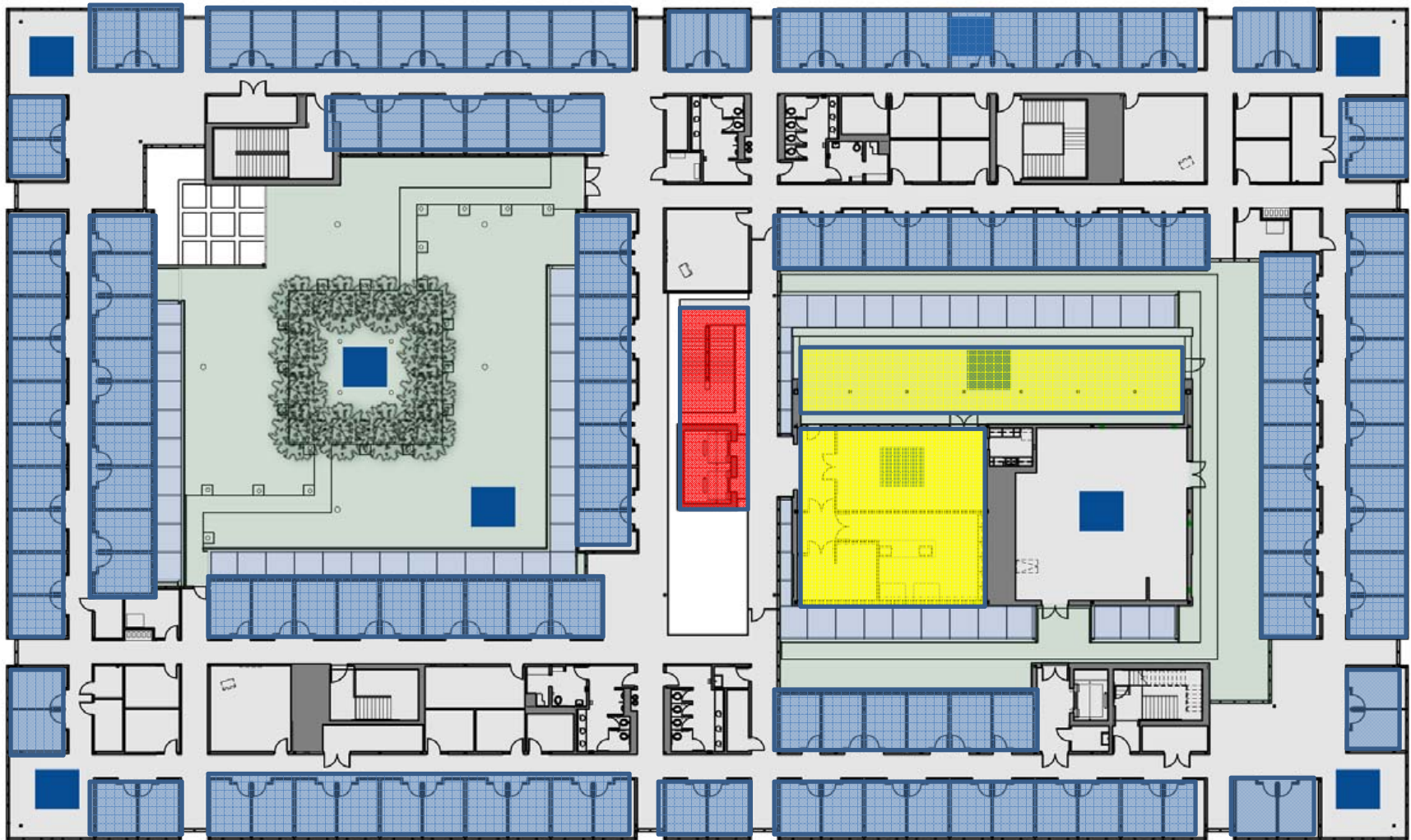


SCHEME MATRIX

1-acre "form driver"



Force pathway collisions



User Support is Critical

The **assignment of offices**

- A key aspect of SUCCESS
- Seniority Selection Order
- Not allowed to see names of the selected offices

















Building Cost

2008 - 2011

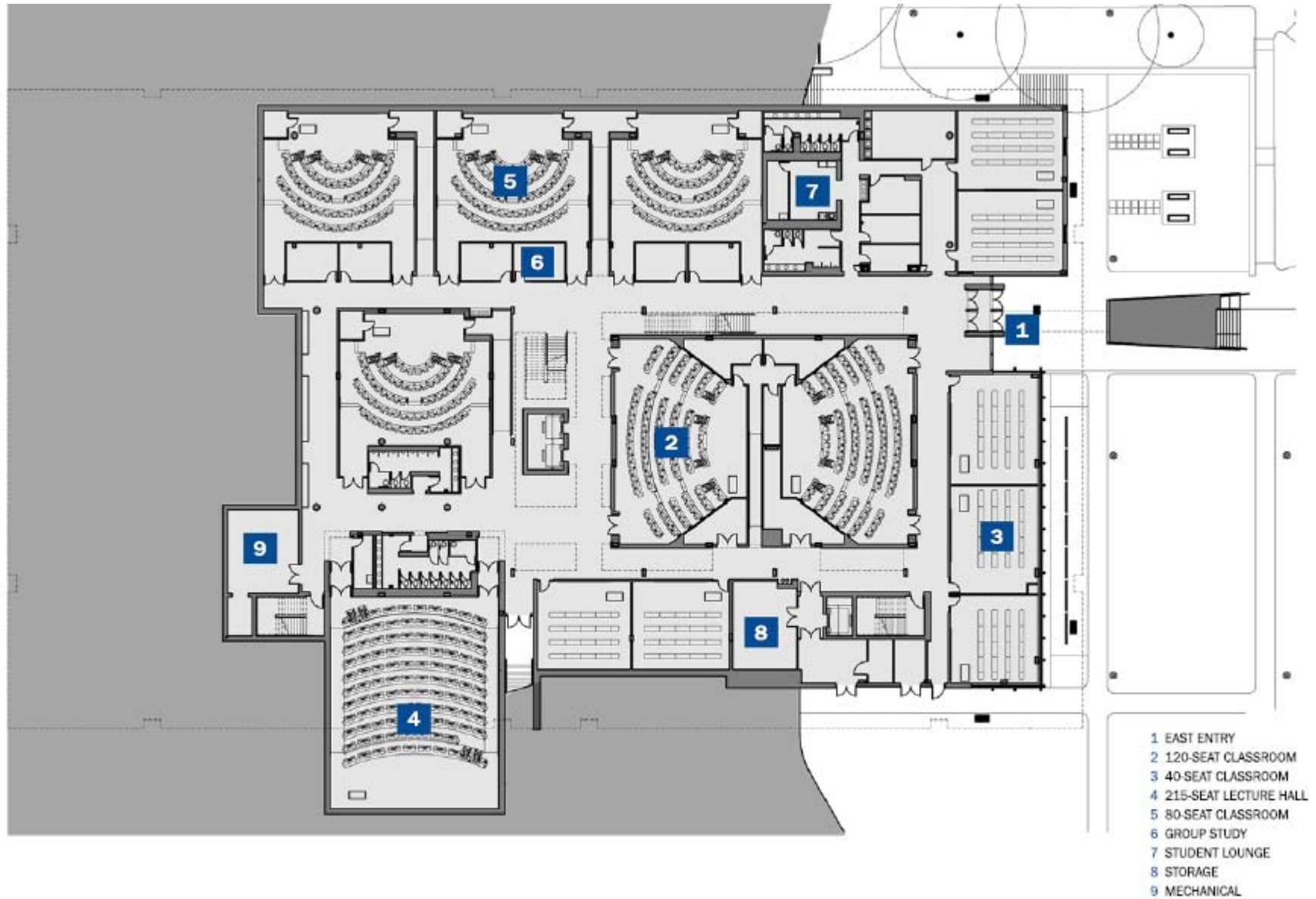
It was the best time to build a building.

\$275 / sq.ft.

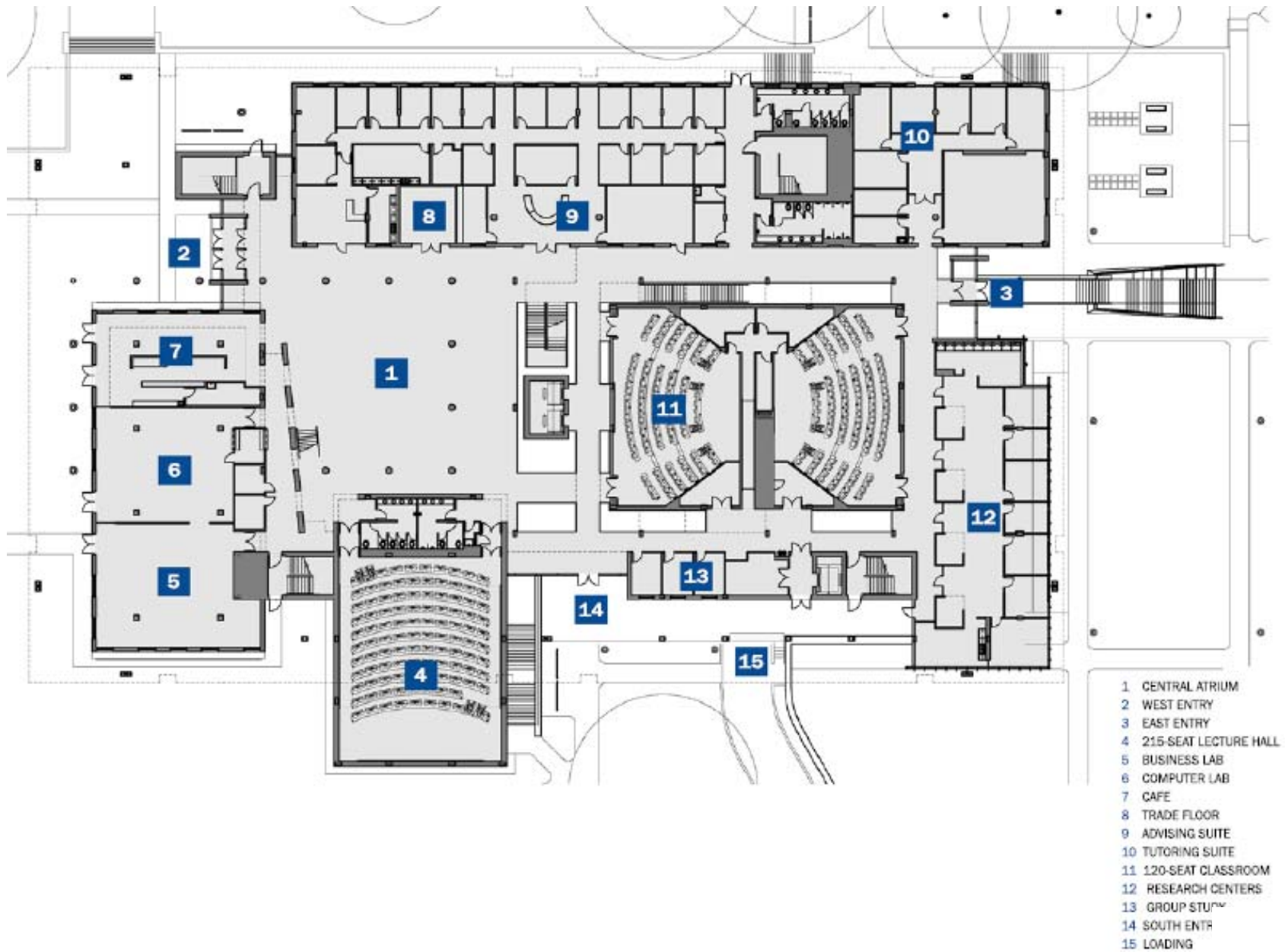
(But, It was the worst time to fund raise)

Floor Plans

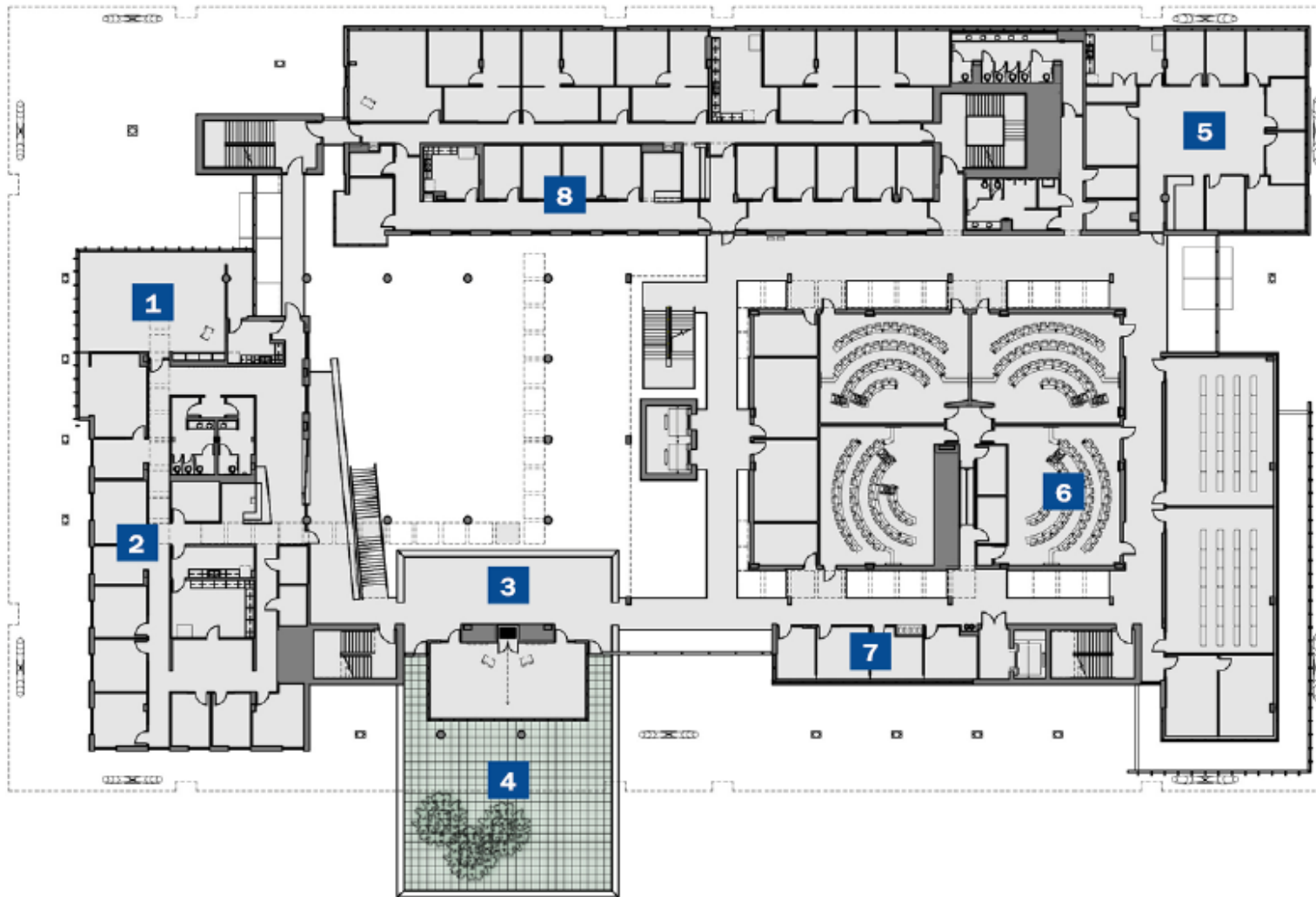
Level 0



Level 1



Level 2



- 1 BOARD ROOM
- 2 DEAN'S SUITE
- 3 GRADUATE LOUNGE
- 4 GRADUATE TERRACE
- 5 IT SUITE
- 6 60-SEAT EXECUTIVE CLASSROOM
- 7 GROUP STUDY
- 8 ADVISING SUITE

Level 3



- 1 FACULTY LOUNGE
- 2 FACULTY TERRACE
- 3 EVENT COURTYARD
- 4 GREEN ROOF
- 5 COLLABORATION AREA
- 6 FACULTY OFFICE
- 7 MECHANICAL



Square Footage Breakdown

GSF:	180,000 gsf
Level 0:	43,100 sf
Level 1:	47,300 sf
Level 2:	40,000 sf
Level 3:	47,500 sf
Penthouse (mechanical): . . .	3,100 sf

Conclusions & Lessons Learned

Did It Work?

- Collaboration - Town Center
- Collaboration - Faculty floor

Original Program Goals:

- Is flexible
- Builds Community
- Is the leader in technology
- Attracts the best and brightest students
- Is inviting and welcoming
- Instills pride
- Has functional classrooms
- Encourages cross-pollination

Collaboration Space

assignable or not?

- Collaboration Impact on Building Efficiency?
- How DO campus designate these new spaces?



Managing Metamorphosis, Building for Change



This program is registered with the AIA/CES for continuing professional education. As such, it does not include content that may be deemed or construed to be an approval or endorsement by the AIA of any material of construction or any method or manner of handling, using, distributing, or dealing in any material or product. Questions related to specific materials, methods, and services may be addressed at the conclusion of this presentation.





*Managing Metamorphosis,
Building for Change*



Seminar Evaluation

We hope you enjoyed this session...

Please take a moment to complete the evaluation form.

Thank you!

